

# SOUTH COAST

Improvement Company

Construction • Renovation

MASSACHUSETTS  
Headquarters  
13 Marconi Lane  
Marion, MA 02738  
t.508.748.6545

FLORIDA OFFICES  
East Coast Office  
4253 SW High Meadow Avenue, Unit 102  
Palm City, FL 33990  
Phone: 772.254.4406  
  
FL License # CGC 1527936

[www.southcoastimprovement.com](http://www.southcoastimprovement.com)



SOUTH COAST

Improvement Company

Construction • Renovation

## BUILD.REFRESH.CONSULT

Mission-driven new construction.

Modernize. Improve. Enhance.

Property, Survey, & Assessment (PSA) Service.

# BUILD. REFRESH. CONSULT

## BUILD

### Mission-Driven New Construction

#### One Contract. One Build. Full Accountability.

Our Design-Build delivery method eliminates the guesswork and finger-pointing common in traditional construction.

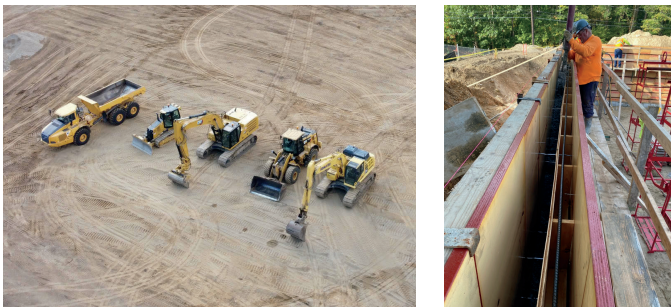
**South Coast Improvement Company** is your single-source partner, integrating design, engineering, and construction into a seamless process.

#### What you can expect:

- Faster project delivery with reduced costs
- Unified Coordination between Field & Design Teams
- Transparent Budgeting and Value-Engineering

#### Project Examples:

- Benchmark at Rye, Rye, NH
- Harbormaster Maritime Center, Marion, MA
- Mendes Montiero House, Dartmouth, MA
- Hamilton-Wenham Regional High School Amenities Building Project



## REFRESH

### Modernize. Improve. Enhance.

#### South Coast Improvement Company

is committed to providing exceptional renovation & refresh services in the senior living, affordable housing, & education sectors.

#### Expertise in Renovations, Care in Every Step

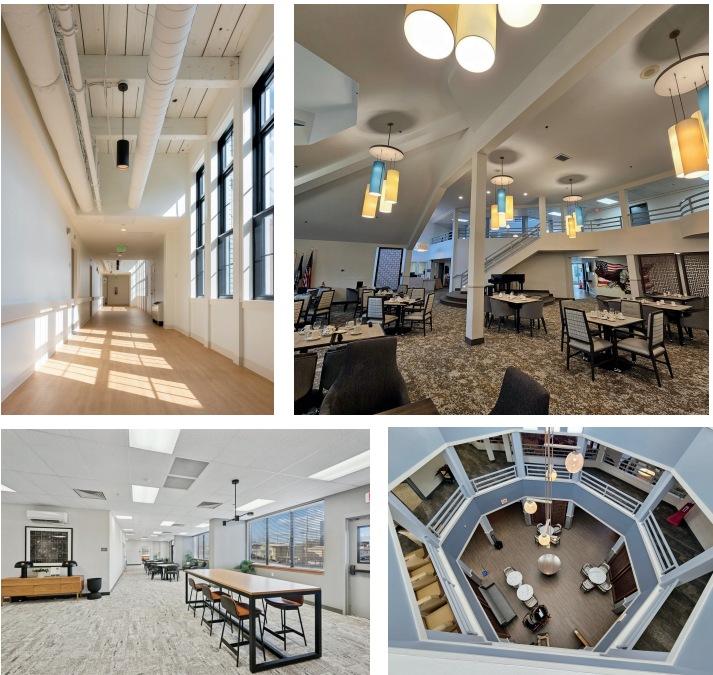
Renovating and building in occupied communities takes more than skill—it requires care, empathy, and precision. With decades of experience, our team knows how to balance construction excellence with the rhythms of daily life. We plan every phase with intention, schedule work to minimize disruption, and approach each project with respect for the people who call the community home.

**Thoughtful renovations** that revitalize your facility while prioritizing comfort, safety, and well-being.

- MEP upgrades
- New flooring
- Fresh paint,
- Refined millwork
- Upgraded doors & windows
- Enhanced electrical systems & lighting
- Plumbing Construction • Renovation

#### Project Examples:

- 200 Webster, Madison, TN
- Willow Wood Senior Living, Fort Lauderdale, FL
- East Wareham Headstart, Wareham, MA
- Nouveau Marc by Barclay House, Kenner, LA
- Ashley Park by Barclay House, Charleston, SC
- Fitchburg Middle School, Fitchburg, MA



#### Project Examples:

- Evans Park Senior Living, Newton, MA
- Springhouse Senior Living, Jamaica Plains, MA
- Capital Ridge at Providence, Providence, RI
- Carriage Green at Milford, Milford, CT
- Village at East Farms, East Farms, CT

An ideal approach for both your renovation and new construction projects.

### Let's Build Your Plan

Contact: Gareth O'Neill 774.419.2206

Contact: Josh Ward 561.246.7405



## CONSULT

### Property, Survey, & Assessment (PSA) Service

Exclusively delivered through our dedicated Capex Group, South Coast Improvement Company (SCIC) offers a **Property Survey & Assessment (PSA)** designed to provide property owners and managers with clear, contractor-backed insight into current and future needs. It's **proactive planning**—powered by decades of construction experience.

#### What's Included:

- On-Site Visual Survey by SCIC Professionals
- Photo-Supported Documentation of Deficiencies
- Budgeting for Immediate Repairs and 3–5 year Capital Needs
- Transparent pricing, We Stand Behind

Proactive Planning—Powered by Decades of Construction Experience.