

### WHEN YOU ARRIVE ON SITE:

1. Check in with the SCI Superintendent
2. Write your name and phone number on the sign-in sheet.
3. Answer the three questions:

**Do you have a cough, fever, or shortness of breath?**

**Have you traveled by airplane within the last two weeks?**

**Are any people in your household, or any close contact currently under investigation, surveillance, or self-quarantine for COVID-19?**

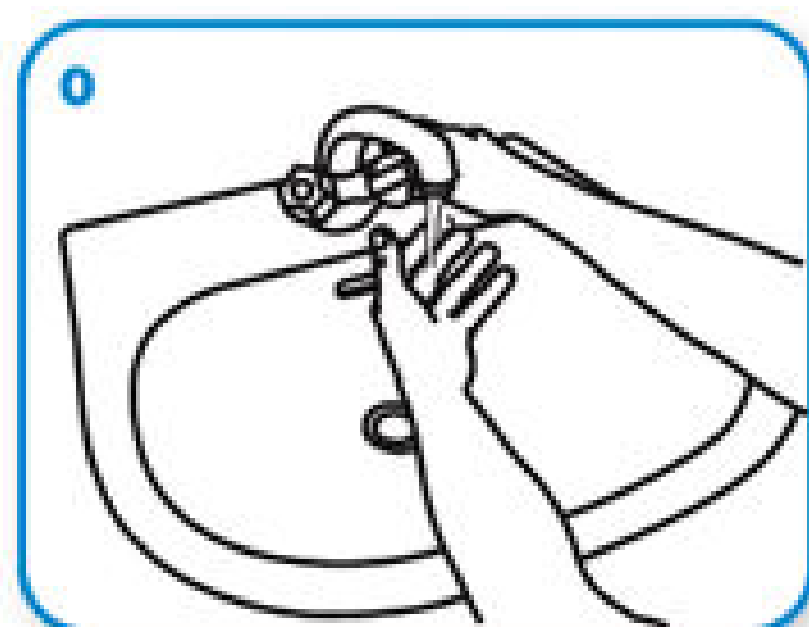
**IF THE ANSWER IS YES TO ANY OF THESE QUESTIONS, YOU WILL NOT BE ALLOWED ON THE PROJECT SITE.**

*Please notify your Project Manager and follow your company protocol.*

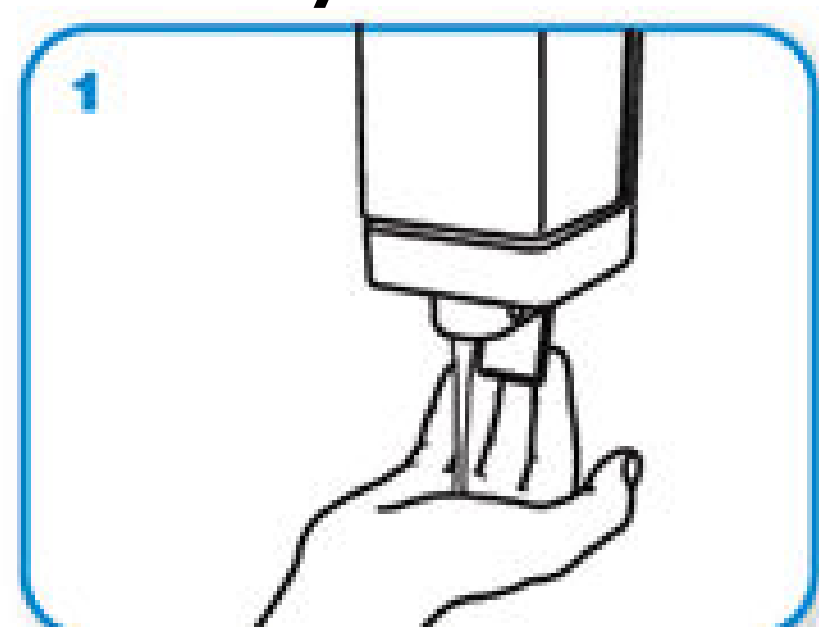
4. *Have the Superintendent take your temperature and add to the sign-in sheet.*

### WASH YOUR HANDS

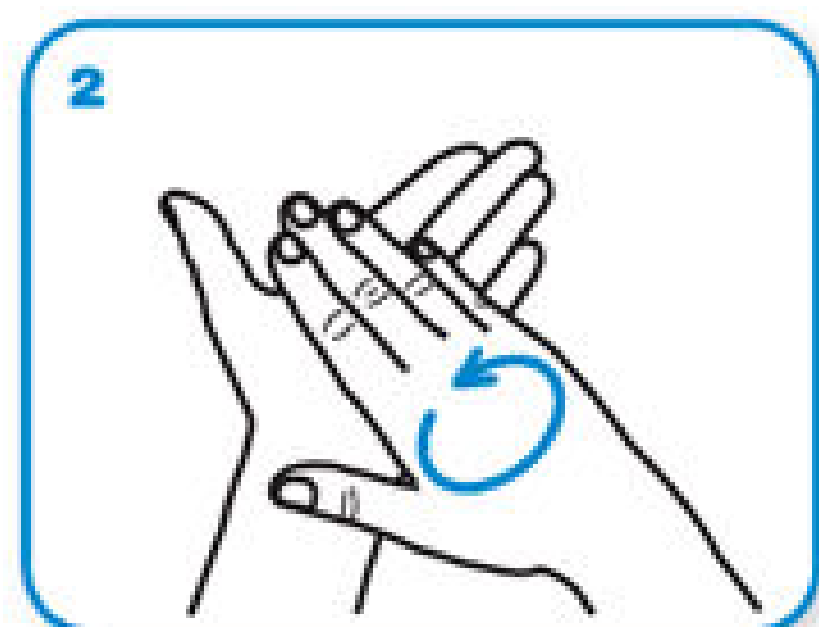
The most basic way to protect yourself is to wash your hands!



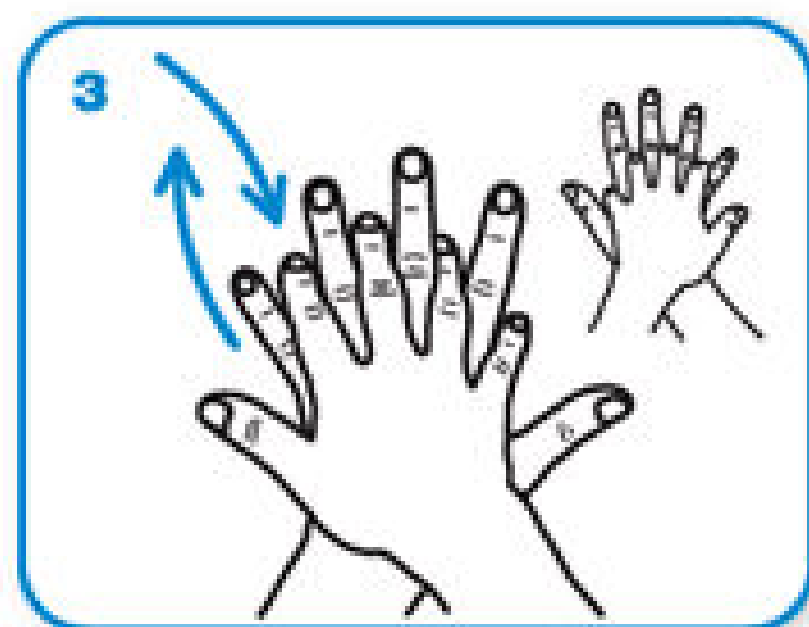
Wet hands with water



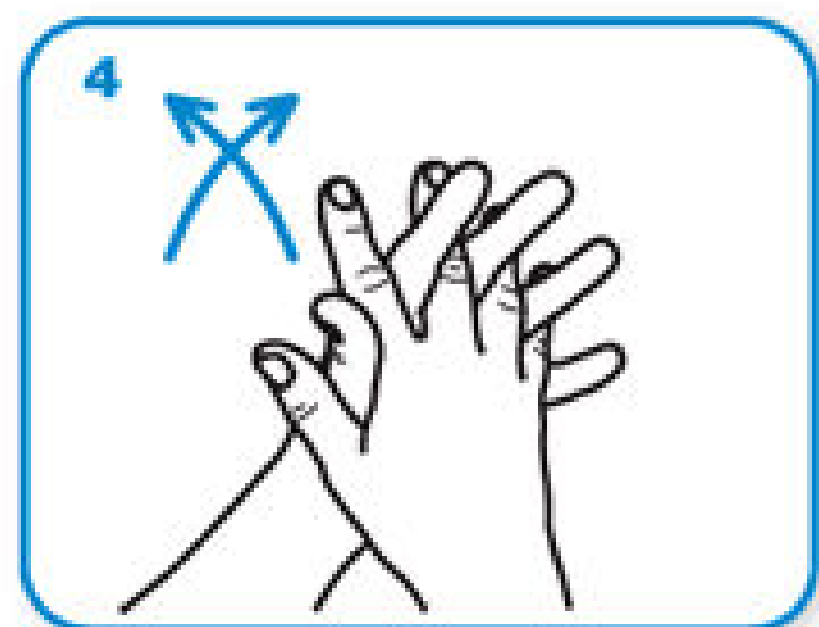
apply enough soap to cover all hand surfaces.



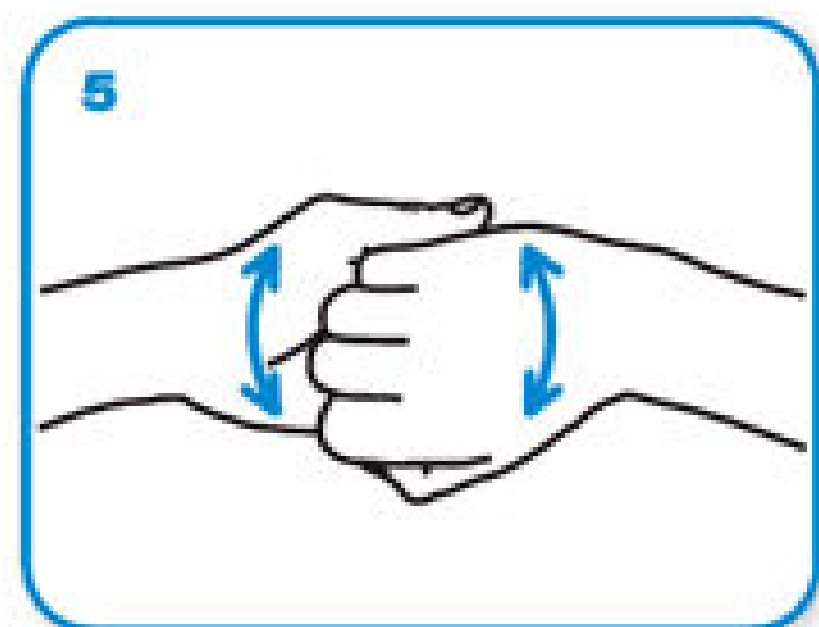
Rub hands palm to palm



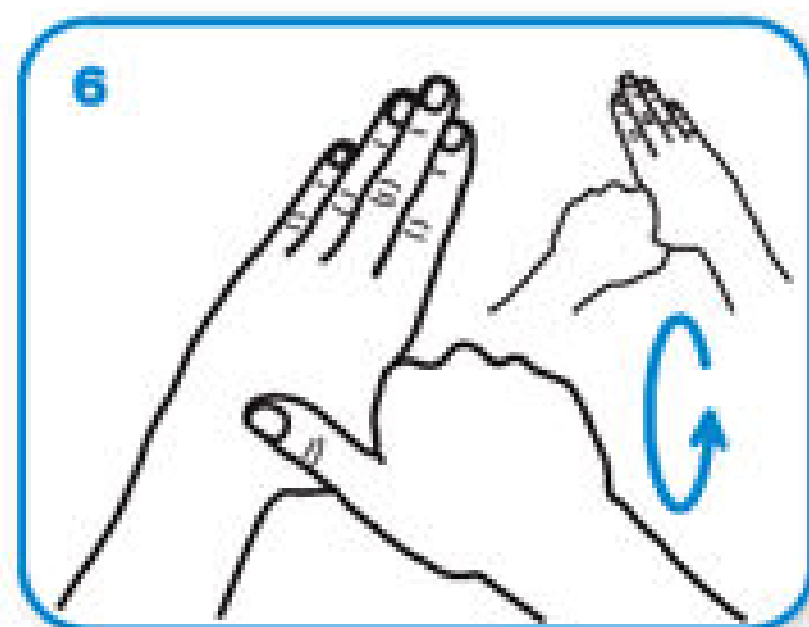
right palm over left dorsum with interlaced fingers and vice versa



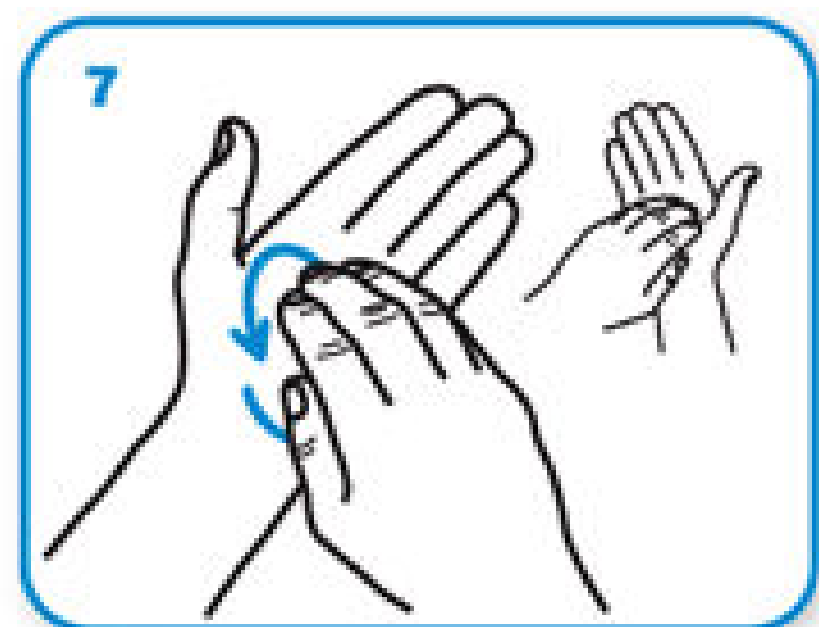
palm to palm with fingers interlaced



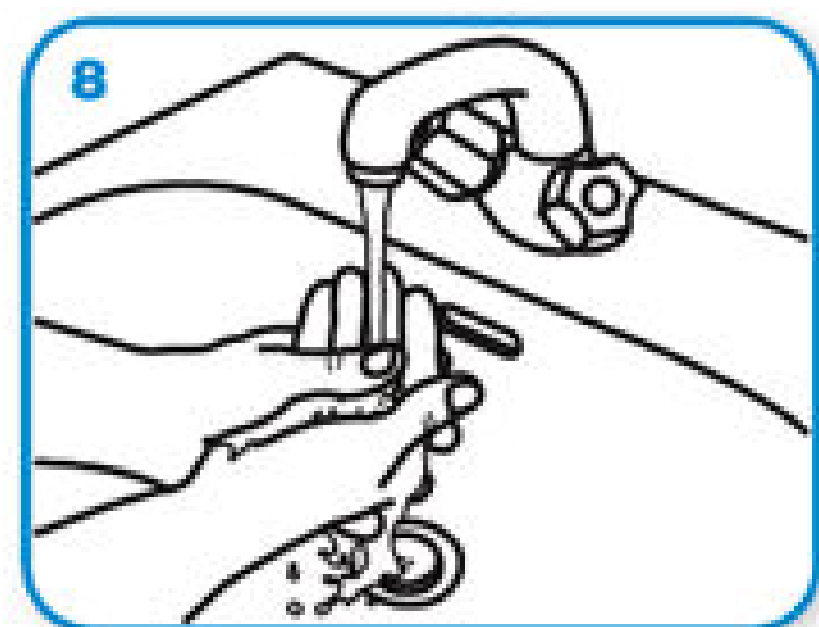
backs of fingers to opposing palms with fingers interlocked



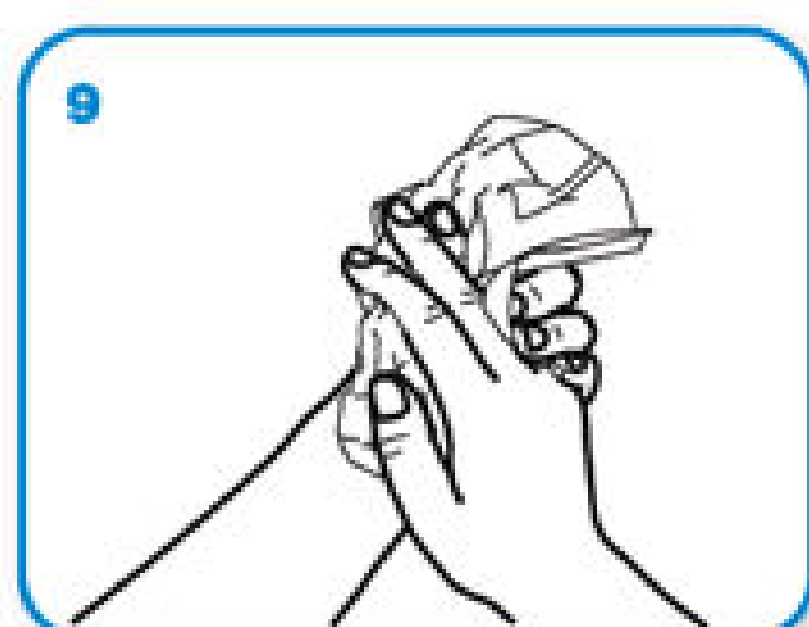
rotational rubbing of left thumb clasped in right palm and vice versa



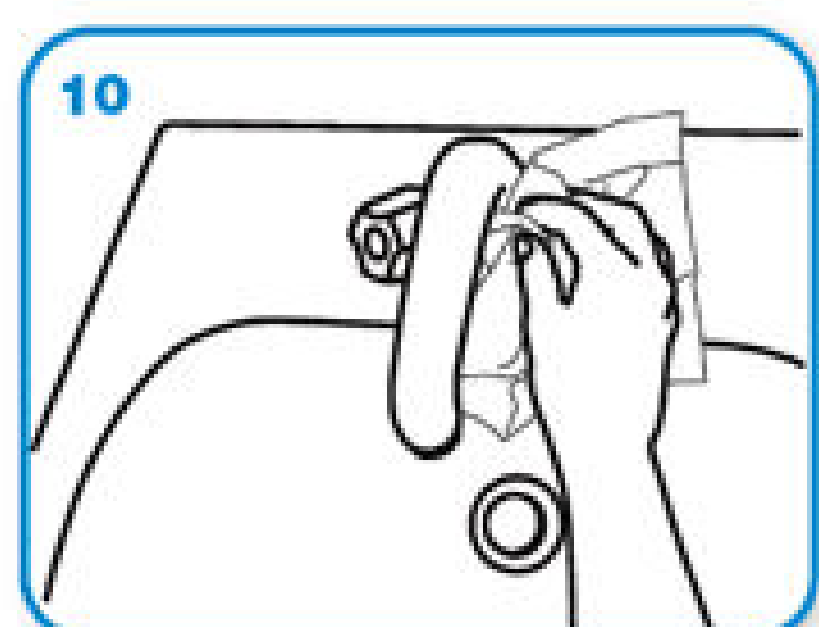
rotational rubbing, backwards and forwards with clasped fingers of right hand in left palm and vice versa.



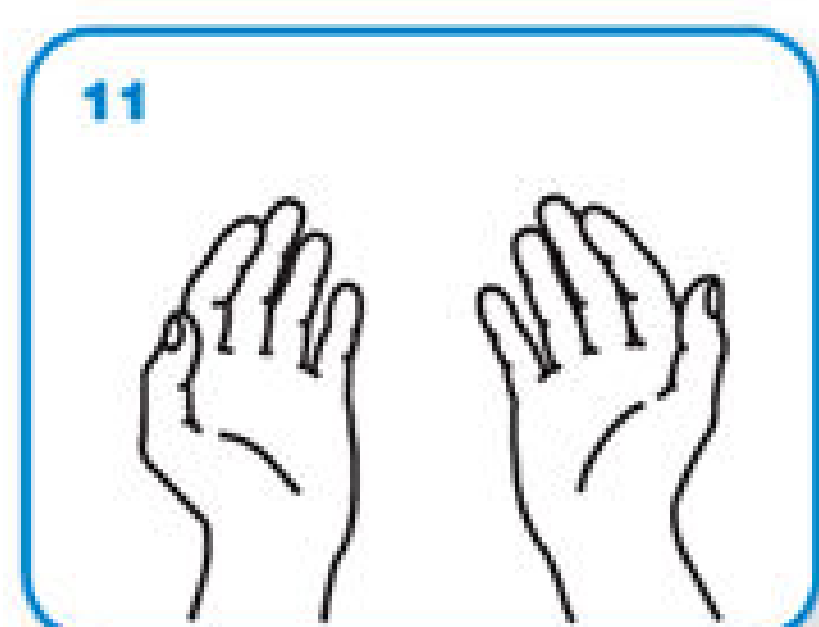
Rinse hands with water



dry thoroughly with a single use towel



use towel to turn off faucet



...and your hands are safe.

Please wash your hands at all possible opportunities!

### PROTECT THOSE AROUND YOU!

## BE A BARRIER NOT A CARRIER

"Since I follow the simple precautions, I am protecting my friends, neighbors and those around me."

- COVID-19 is the MOST impactful to the elderly, or those with compromised immune systems
- Unlike the flu, there is no vaccine – so it can more easily spread in a community.
- Symptoms can be mild, so an individual can unknowingly be infected and spread it.
- Precautions are simple: wash hands, especially after touching your face. Cover coughs.
  - Stay calm, and be alert for measures recommended by your company and local government.

**MAKE IT YOUR MISSION TO PROTECT THEM!**

**WE'RE ALL IN THIS TOGETHER!**