

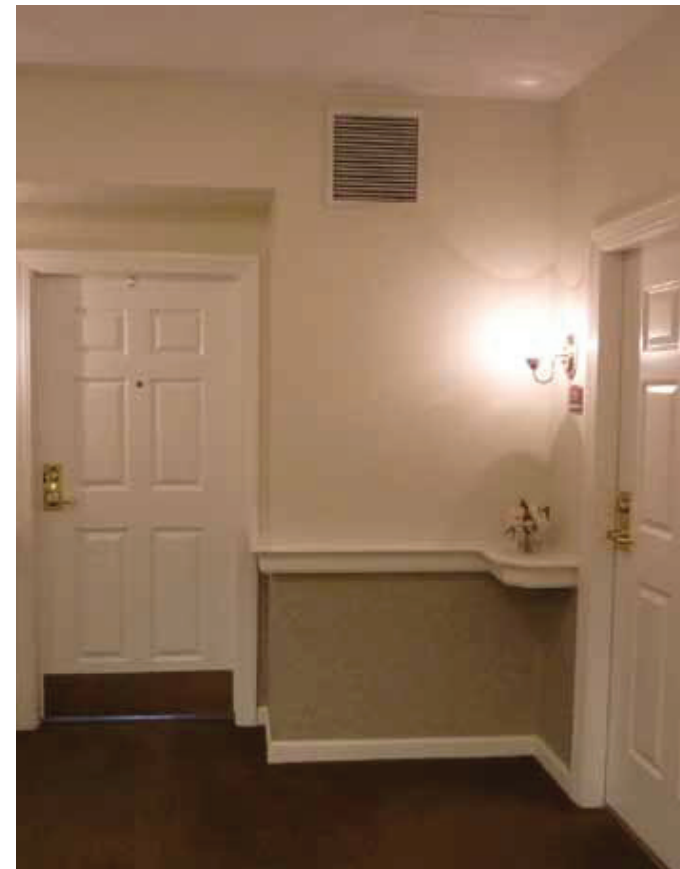
Atria Bay Spring Village

Barrington, Rhode Island



General Contractor:
South Coast
 IMPROVEMENT COMPANY
 Construction • Renovations

Architect: EGA P.C.; Interior Designer: Wellesley Design Consultants, Inc.; General Contractor: South Coast Improvement Company; Vinyl Flooring: Amtico; Tile: Daltile; Activity Chair: EOC; Lounge Chair: Fairfield; Loveseat: Fairfield; Dining Room Chair: Fairfield; Lighting: Forecast; Carpeting: Shaw; Table: Space Tables Inc.



From its incorporation in 1667, Barrington's history extends back to members of the Mayflower party. With its close proximity to the shores of the Providence River and Narragansett Bay, the bucolic and quintessentially New England town is an ideal waterfront community to live and retire. In July 2005, *CNN/Money* and *Money Magazine* ranked Barrington sixth on its list of the 100 best places to live in the United States.

Atria Bay Spring Village is located at the site of a former lace factory. Although long abandoned, the factory had provided livelihood to hundreds of workers in the area. The renovation of a wing in a building at the former factory location brings full circle the history of supporting families from their youth, through retirement, and then to a place where as a result of the aging process they are in need of care services.

The project plan involved the conversion of 13 existing apartments into a new 11-unit/15-bed Life Guidance® neighborhood (memory care) with a separate secure outdoor garden area. Two apartments were converted into an open kitchen, dining room, and living room. These rooms provide an intimate yet open area with great visibility and opportunities for socialization.

The open kitchen improves the residents' dining experience by making them feel a part of the preparation activity.

Jury comments:

- The design looks very contemporary, clean, and bright!
- Really interesting repurposing of rooms.
- Conversion of the two units to utilize a corner of the building abundant with natural light is a wonderful transformation. What would have been perceived as dead-end is now a beautifully designed shared neighborhood space.
- Excellent use of space. Many different activities can take place at once. Each zone is clearly established, yet the entire space remains cohesive. Good choices were made for the flooring—easy transition for walkers, canes and wheelchairs. Well thought out!
- A wonderful and interesting environment for Memory Support. Bravo!
- Created a visually interesting space with many design elements but made it feel lively instead of cluttered. Great use of natural light.
- By removing two apartments, they have been able to create the core of a home: a place to socialize and a place to dine. The color palette is subtle and takes full advantage of creating a light-filled space to gather.

Reader comments:

- It looks busier and more appealing.
- I feel Atria Bay Spring Village made a very inviting environment for their residents, family members and visitors to enjoy. Great!
- This is where I want my mom someday!!
- I am in the medical field and I know many, many people are talking about Atria Bay Spring Village. It is beautiful.
- You can send me here when I am an elderly man. Great space.
- Beautiful space in a beautiful area.
- Bright, cheery atmosphere!
- The best by far.

